

Business Process Management (BPM) is a holistic management approach focused on aligning all aspects of an organization with the wants and needs of clients. It enables organizations to be more efficient, more effective and more capable of change.

etfile's ABPM automates document-centered work processes with customizable workflow designs. A graphical interface provides a canvas to create, manage and implement workflows. This suite provides automated rules-based routing and monitoring while notifying if processes are delayed. Integrated scheduling is built-in so users know what document will be processed next.

**BENEFITS:**

- Cost Cutback
- Enhanced Operational Efficiencies
- Error Reduction
- Superior Communication
- Procedural Audits

Our ABPM encompasses all responsibilities, assets and triggers related to a procedure. It computerizes that process, synchronizes it and supervises distinct procedural actions then implements related business rules using its workflow engine.

“ Business Process Management should be a key element of any company’s operations. As part of our suite of workflow and process management tools etfile’s ABPM helps your business save time and money. ”

– Mark Linton  
President, etfile



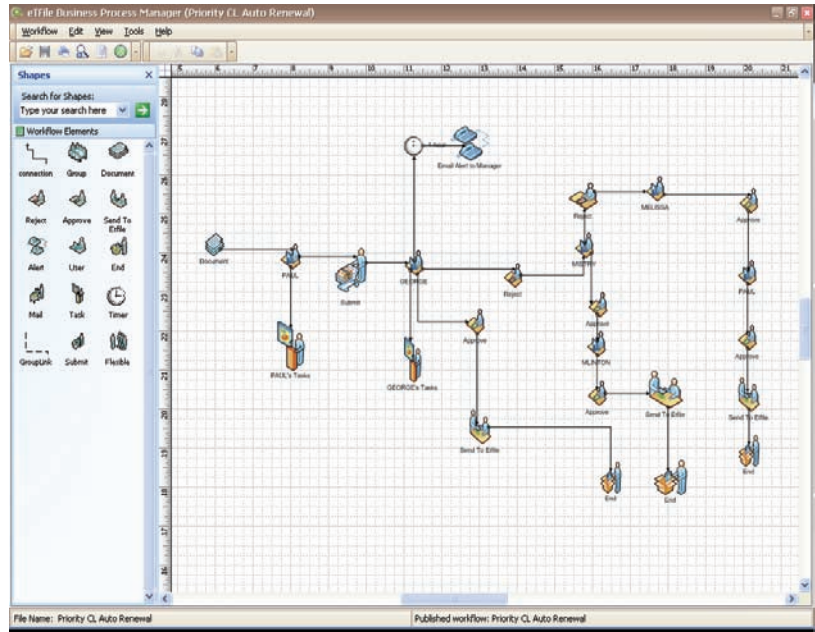
Advanced Business  
Process Management

info@etfile.com  
www.etfile.com

Toll Free: 888.672.7737  
Direct: 508.475.4500  
Fax: 508.475.4590

### etfile's ABPM Features

- Create custom workflow through a flow chart designer.
- Provides automated, rules based routing and monitoring.
- Notifications are automatically sent out if processes are delayed.
- With built in integrated scheduling users see what files will be processed next.



### etfile Workflow Console™

In the workflow console content is processed by predefined workflow rules. Documents arrive in user inboxes ready for filing, collaboration and preparation.

Top 5 Features include:

- Routing to other user inboxes
- Document history
- Document Activities
- Indexing to management system data or adding custom descriptions
- Task list for workflows

